

THE NOTEBOOK:



ANGLE EDITION

By:

Michelle + Laura



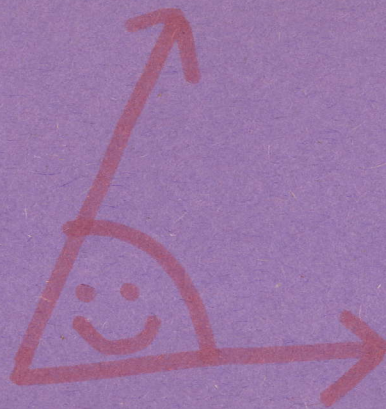
Once upon a time on the Island of the Angles, there lived the Royal Family. King Angle had two children, a Prince and a Princess. The Princess's angle measured less than 90 degrees, so they called her Princess Acute Angle. The Prince's angle measured more than 90 degrees, so they called him Prince Obtuse Angle.



Prince Obtuse longed to be a Straight Angle, which is an angle whose measure is 180 degrees. He knew he needed to find his Supplement. Prince Obtuse's supplement would make them equal to 180 degrees.



Prince Obtuse knew he measured 100 degrees. One day he found another angle and asked her measure. She replied, "I'm an Acute Angle, 80 degrees to be exact!" Ecstatic, the Prince cried, "You're my supplement! Together we add up to 180 degrees!" They got married and lived happily ever after.



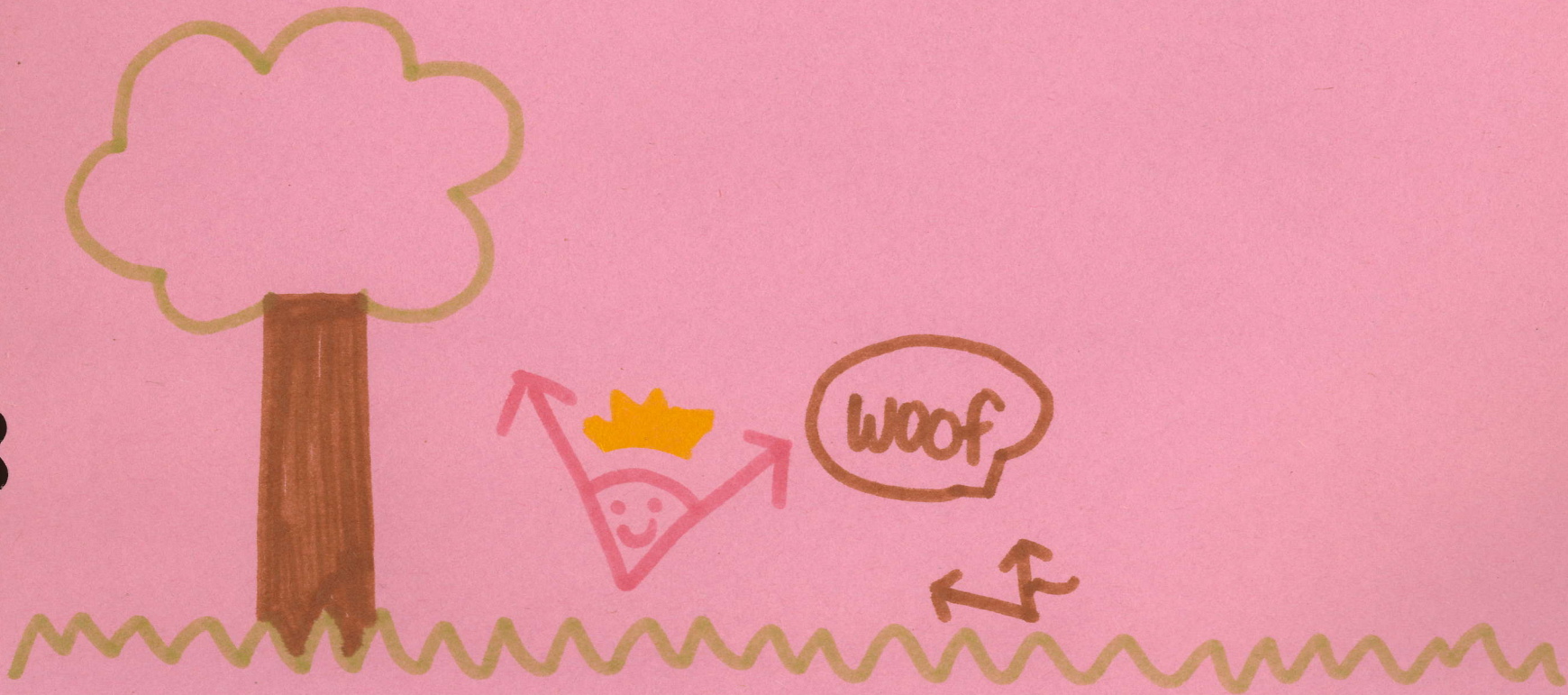
Since her brother was married, Princess Acute wanted to get married too! She knew that she needed to find her Complement. If Princess Acute found her Complement, they would be equal to 90 degrees! One day, the Princess, whose measure is 45 degrees, walked around the Island of the Angles. She walked around the corner and saw the most handsome angle! "Hello, what is your measure?" she asked him. The Unknown Angle replied, "I'm not sure!" Well Princess Acute knew the perfect way to find out if he can be her complement!



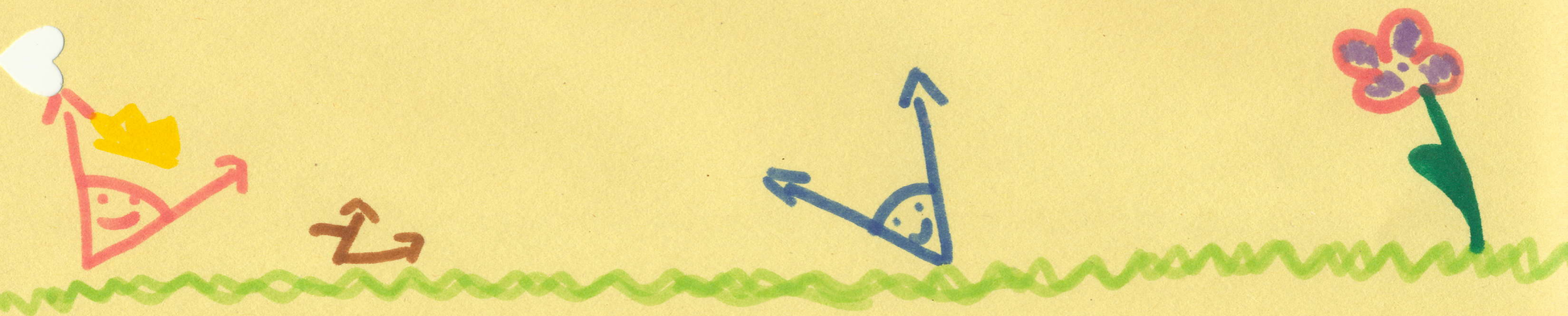
The two angles walked back to the Royal Palace where King Angle was waiting for them. King Angle took one look at the Unknown Angle and exclaimed, "He can't be your complement, and I estimate that he is an Obtuse Angle! I'm sorry Princess Acute, but Unknown Angle is not your complement."



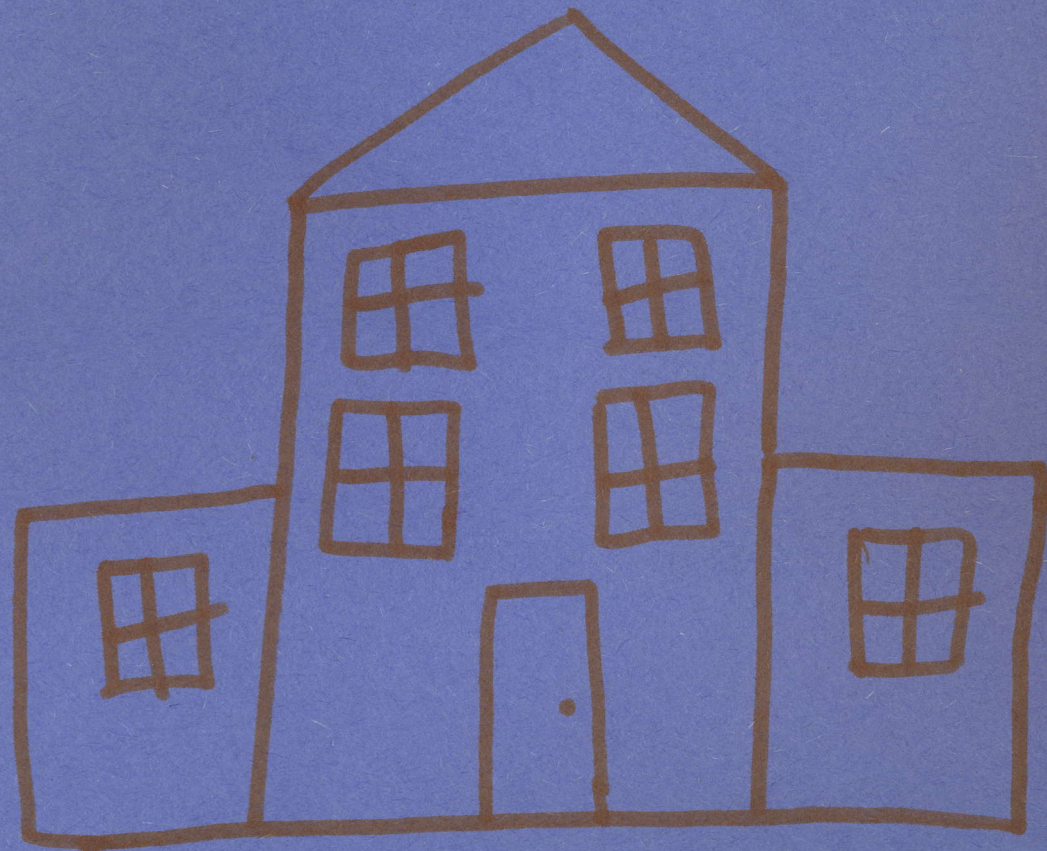
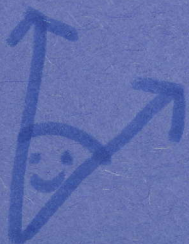
Sadly, Princess Acute decided to take a walk through the park. She figured that if she couldn't find her complement, she would just adopt a vertex. A vertex is where the two lines of an angle meet. The adorable little vertex ran right to Princess Acute like a little puppy.



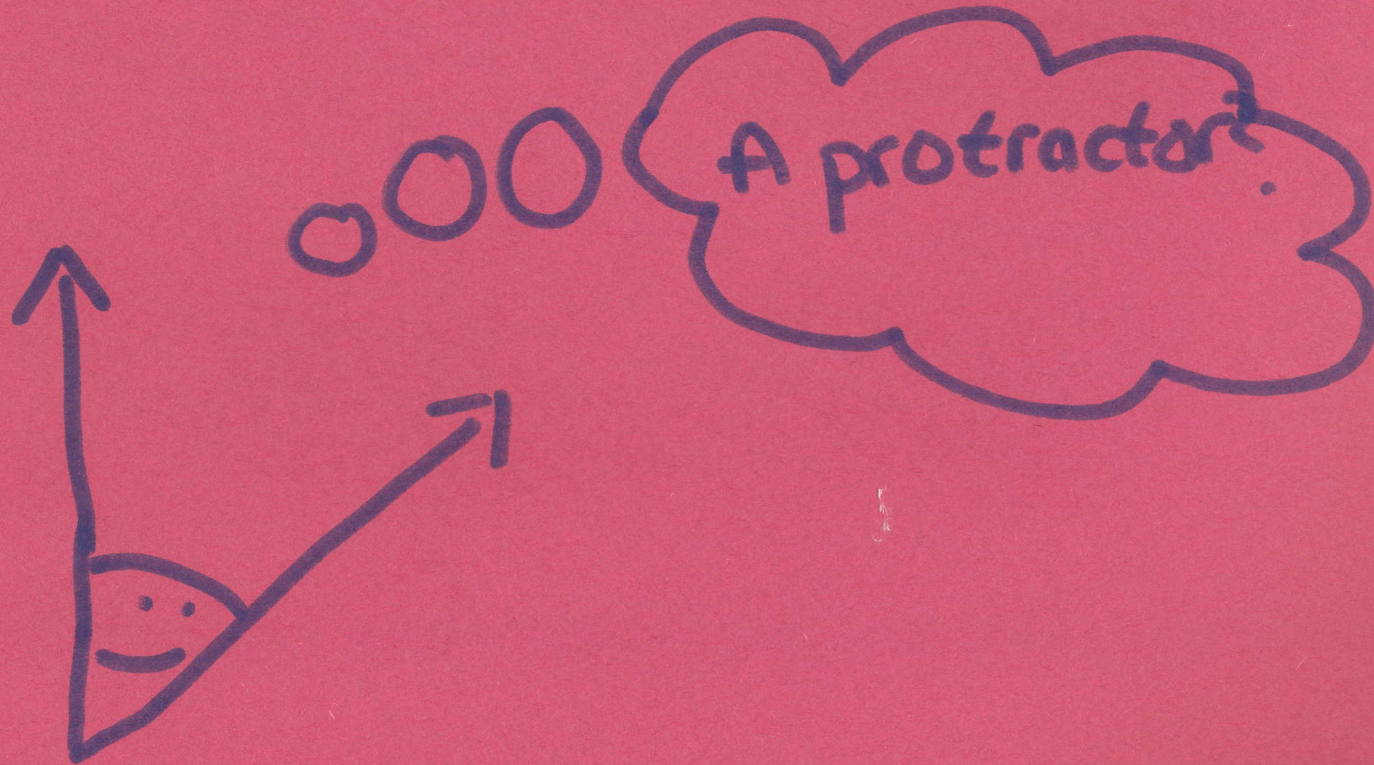
The princess was playing fetch with her new vertex, when Archie Angle came over looking for his vertex's ball. She had learned how to look at an angle and guess its measure. This is called estimating. Princess Acute immediately became ecstatic. Princess Acute thought that Archie Angle could be her complement!



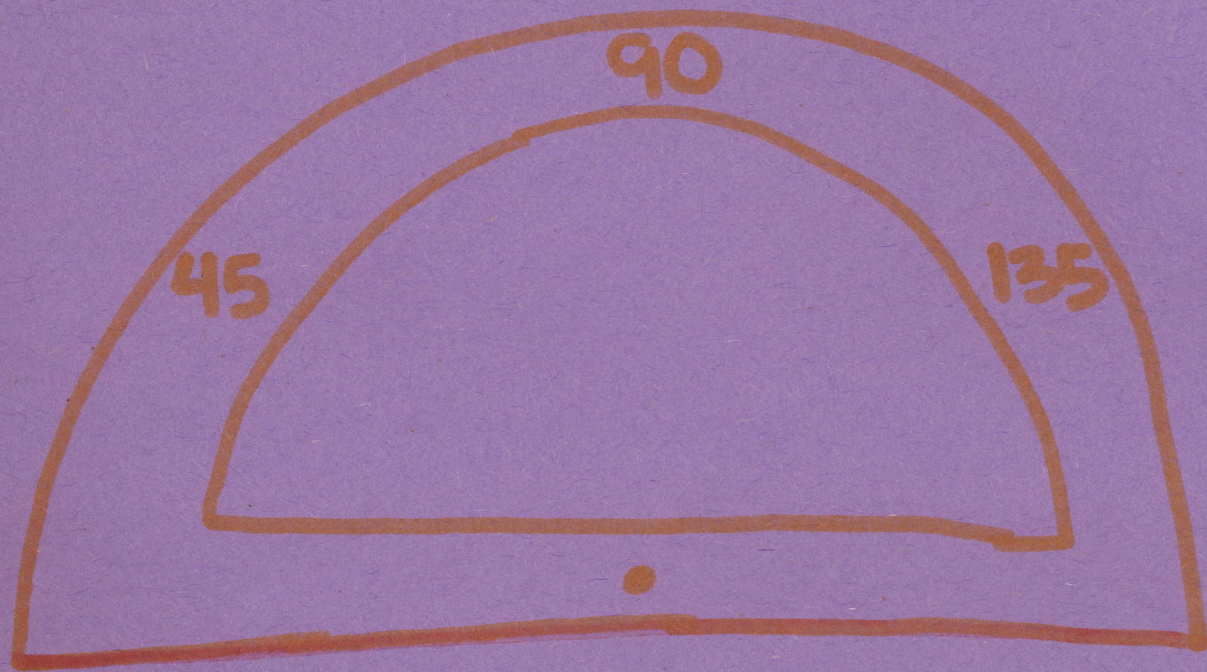
Archie Angle and Princess Acute walked back to the Royal Palace. "King Angle, I think I have found my complement!" exclaimed Princess Acute. King Angle replied, "I think you might have Princess Acute! Let me go get my protractor and I will measure for you."



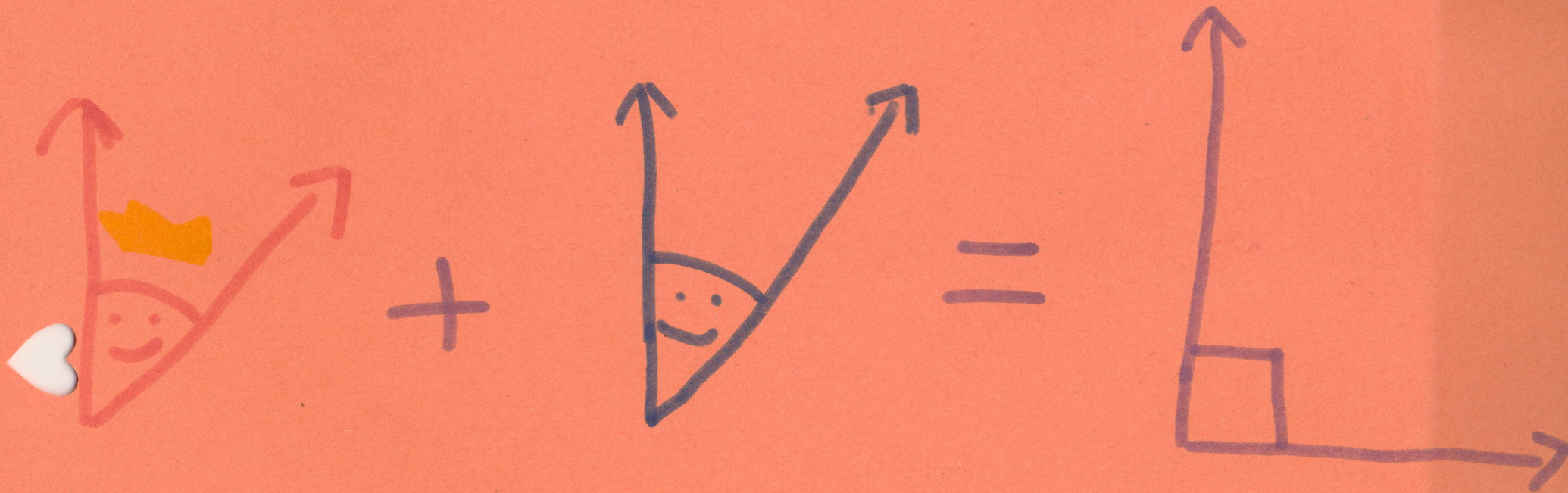
Archie Angle looked confused. "What is a protractor?" he asked. A protractor is an instrument used to measure angles!" Princess Acute told him.



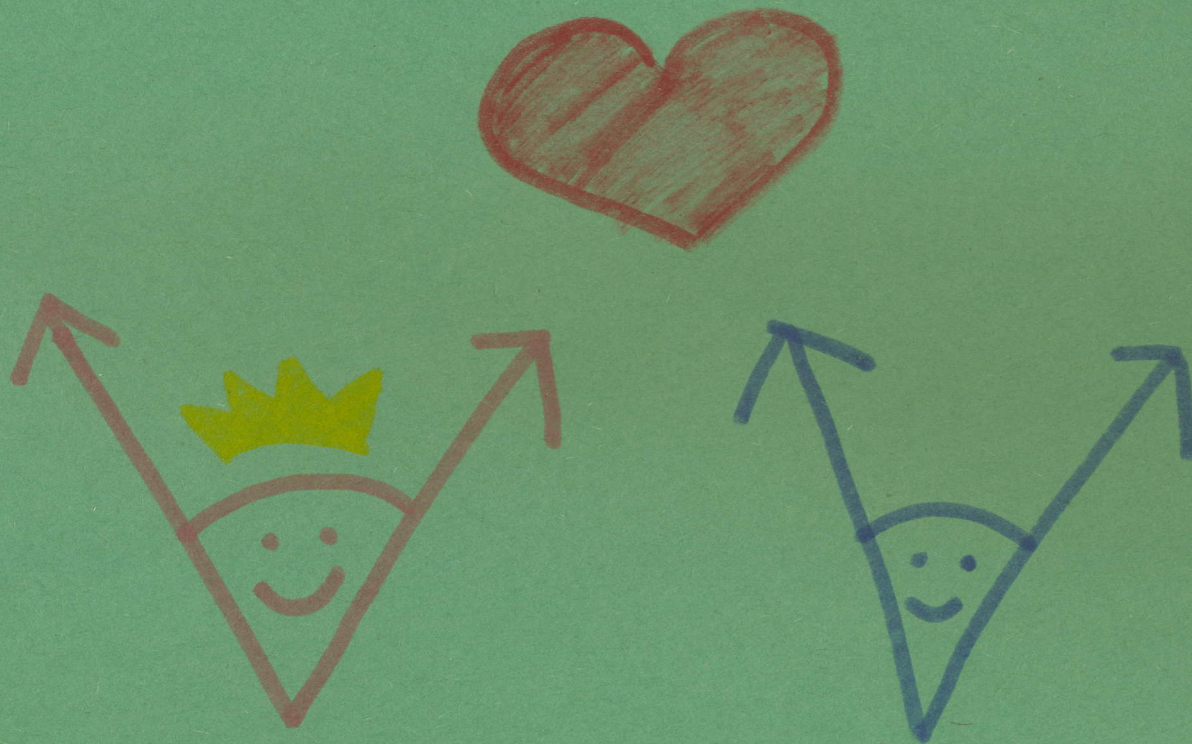
King Angle used his protractor to measure Archie Angle.
"Well", King Angle said, "Archie is 45 degrees".



"Well since we have the same measure that means we are congruent!" Princess Acute cried. "Yes Princess, you are. And since your measure, 45 degrees, plus Archie's measure, 45 degrees, equals 90 degrees, you are complementary to each other!" King Angle said.



Princess Acute was thrilled that she had finally found her complement! And since the measure of the angle they formed together was 90 degrees, they formed a right angle! Princess Acute and Archie Angle lived happily ever after as a Right Angle.



<http://www.mathleague.com/help/geometry/angles.htm>

<http://www.analyzmath.com/Geometry/angles.html>